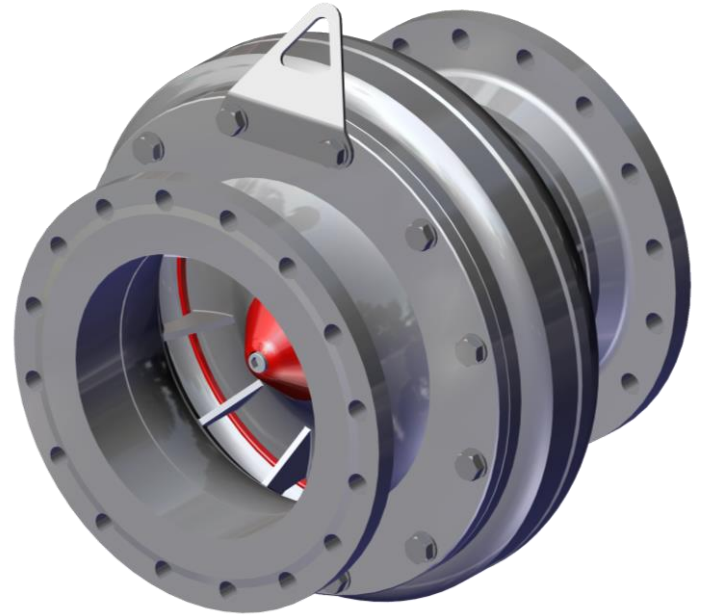


### APPLICABLE FOR:

- ✓ Civil Defence and Government Shelters
- ✓ Protective Structures and Applications
- ✓ Critical Infrastructure and Strategic Assets
- ✓ Command and Control Centers
- ✓ Oil & Gas, Chemical and other types of Hazardous Industries
- ✓ Explosives & Dangerous Materials Storage Facilities
- ✓ Nuclear Power Plants



PSV-350-LL

### Temet's PSV-Series Blast Valves:

Blast valves are used for protection of ventilation air intake and exhaust openings and airways in Civil Defense and government shelters. The PSV-blast valves are typically used in special applications that require high blast protection from both positive and negative phases of the blast. Allowing the blast load to enter the protected space can seriously harm people and equipment.

**PSV-blast valves** are designed to allow easy movement of high amount of air inwards and outwards. The valves are available in various models to fulfill the customers technical requirements.

### Highlights and Characteristics:

- Installed in thousands of applications and approved by various government and civil organizations
- High inward and outward airflow with minimal pressure drop
- Designed and tested to withstand multiple blast loads up to 100 bar (10000 kPa)
- Designed and tested to withstand mechanical shock with rapid change in velocity
- Rapid closing and extremely effective attenuation of the oncoming blast
- Designed to function in various operating environments
- Available sizes: PSV-150, PSV-250 and PSV-350

Disclaimer: All rights reserved. Temet reserves, at any time and without notice, to modify or change the products or information contained herein

V00306-0

