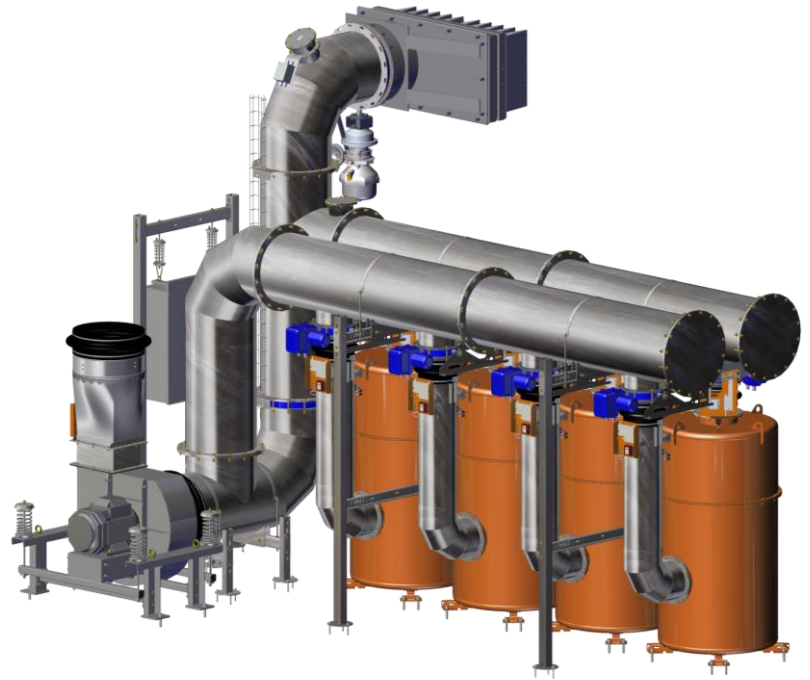


APPLICABLE FOR:

- ✓ Civil Defence and Government Shelters
- ✓ Protective Structures and Applications
- ✓ Critical Infrastructure and Strategic Assets
- ✓ Command and Control Centers
- ✓ Oil & Gas, Chemical and other types of Hazardous Industries
- ✓ Nuclear Power Plants



ESL-A Automatic Filtration Unit

Temet's ESL-A Series CBRN-Filtration units:

Temet ESL-A automatic filtration units are used in both the civil defense and operative shelters as well as in industrial facilities, mainly in safe, rescue and control rooms. The filtration units are designed for three phase filtering of CBRN-threats in gastight facilities. The units provide protection from a wide range of chemical warfare agents (CWA) as well as toxic industrial chemicals (TIC).

Temet ESL-A automatic filtration units have the necessary operational modes for the entire sheltering period; filtration, by-pass and shut-off (close-up) modes.

Highlights and Characteristics:

- Fully automatic system that allows constant readiness against CBRN-threats
- Installed in numerous of applications and approved by various government and civil organizations
- Stand-alone PLC control unit included as well as connectivity to building management system (BMS), shelter control system (SCS) and CBRN-detection systems
- Several sizes available for different air flow volumes, with a single units' maximum filtration air flow volume being 7500 m³/h
- Self-diagnostics included to ease the maintenance and service of the unit

Disclaimer: All rights reserved. Temet reserves, at any time and without notice, to modify or change the products or information contained herein

V00328-0

